

# MONTHLY MEMBERSHIP PROGRESS REPORT

District 19 L

Results as of: 6/30/2024

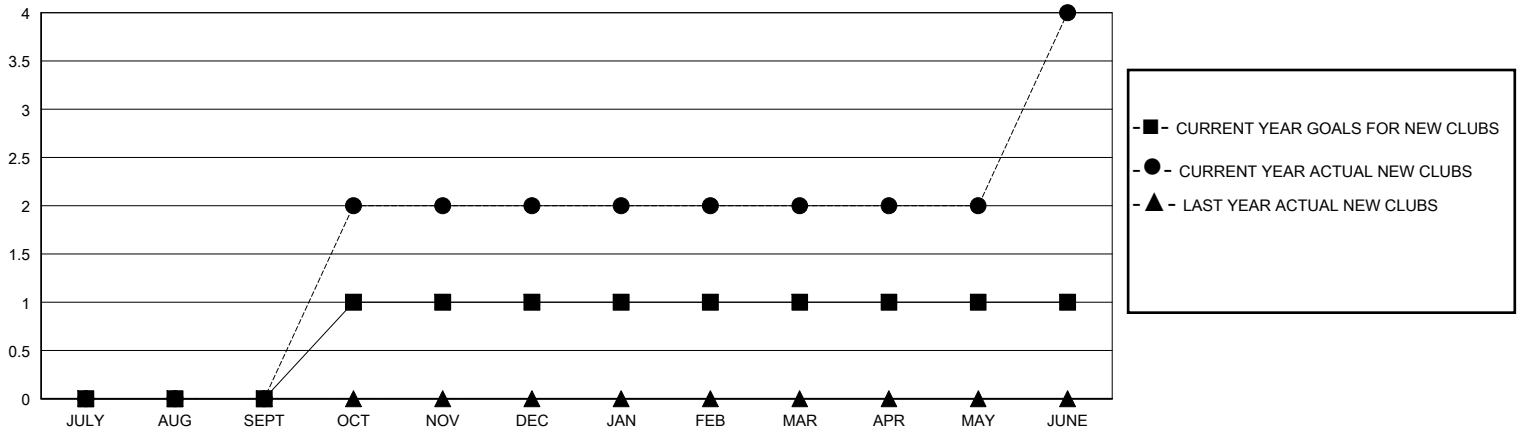
GMT:

LOCATION BRITISH COLUMBIA

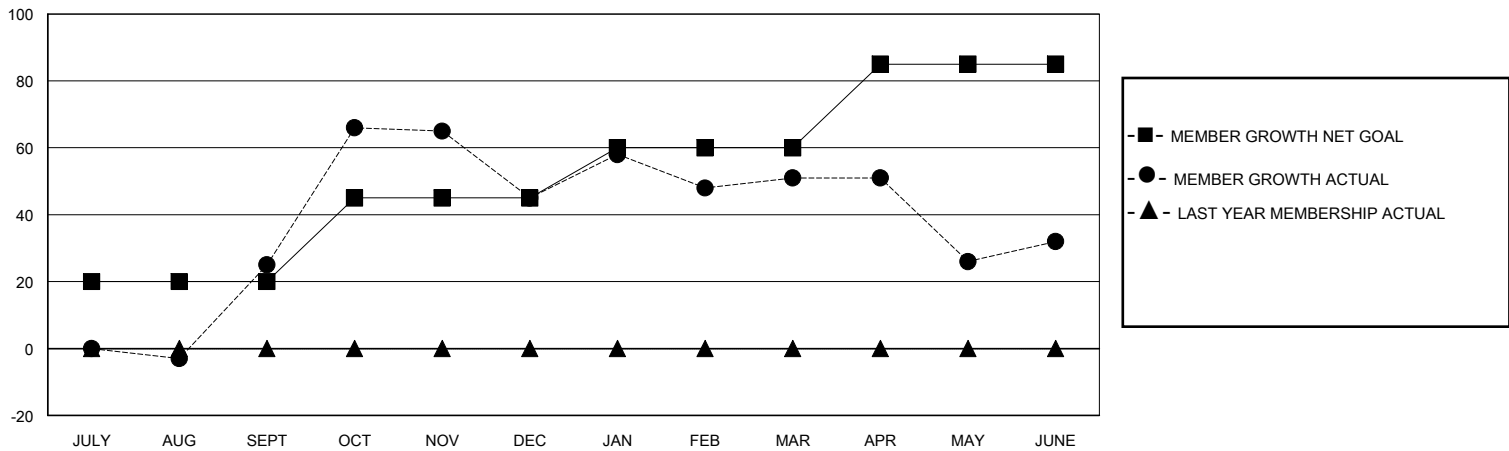
GMT CA

Clubs				Members			
RESULTS FOR 2023-2024				RESULTS FOR 2023-2024			
QUARTER	NEW CLUB GOAL	NEW CLUBS	DROPPED CLUBS	QUARTER	MEMBER GROWTH NET GOAL	MEMBER GROWTH ACTUAL	DROPPED MEMBERS ACTUAL (including transfers)
JULY/AUG/SEPT	0	0	0	JULY/AUG/SEPT	20	71	43
OCT/NOV/DEC	1	2	0	OCT/NOV/DEC	25	110	81
JAN/FEB/MAR	0	0	2	JAN/FEB/MAR	15	53	45
APR/MAY/JUNE	0	2	0	APR/MAY/JUNE	25	105	114

GOALS AND ACTUAL NEW CLUBS CUMULATIVE



GOALS AND ACTUAL MEMBERS CUMULATIVE



DROPPED CLUBS: 2	72 CLUBS OF 96 ADDED 1 OR MORE NEW MEMBERS	<u>GENDER DISTRIBUTION</u>	
		MALE	1,120 (53.28%)
		FEMALE	980 (46.62%)
<u>DROPPED MEMBERS</u>		TOTAL FAMILY UNIT MEMBERS 295	
DECEASED	39	FAMILY MEMBERS PAYING HALF DUES 151	
CLUB CANCELLED	0		
OTHER	240		
TOTAL	279		

[CLICK HERE FOR CUMULATIVE MEMBERSHIP DATA](#)